



### Who ...?

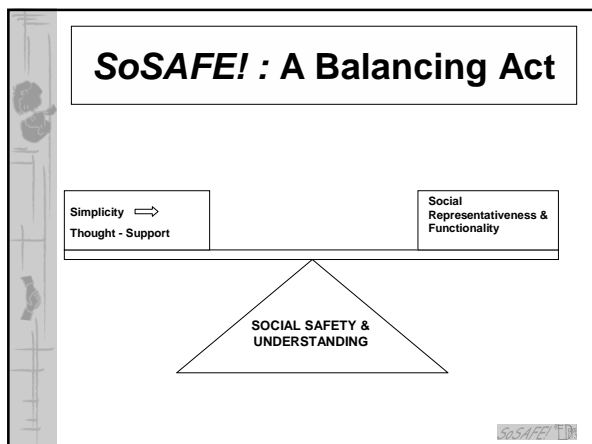
- People with Moderate – Severe Intellectual Disability (MSID)
- People with Mild Intellectual Disability (Mild ID)
- **People with Autism Spectrum Disorder (ASD)**
- Children in Early Childhood
- Parents with Intellectual Disability (ID) or Autism Spectrum Disorder (ASD)

### Why ...?

- People with a disability are more vulnerable to abuse and exploitation
  - handling and care
  - difficulty being believed, heard or understood
  - difficulty accessing appropriate resources
  - difficulty identifying sources of help

### What ...?


- SoSAFE! is a set of visual and conceptual tools that promotes social safety
- It is **NOT** a panacea for all problems related to sexual exploitation of people with a disability



### Talk-Touch Triangle


The image shows a grid titled 'TALK TOUCH TRIANGLE'. The grid has 6 rows and 10 columns. Each cell contains a small icon representing a different concept or action. The icons include various symbols like people, speech bubbles, and touch-related symbols.

- is the **rule-based simplified model of social reality** in symbols & concepts
- identifies 9 person groups
  - partner, boy/girlfriend, family, close friend, community workers I know, friend, other people I know, community workers I don't know, other people I don't know
- incorporates “rules” called **Protective Relationship Limitations**




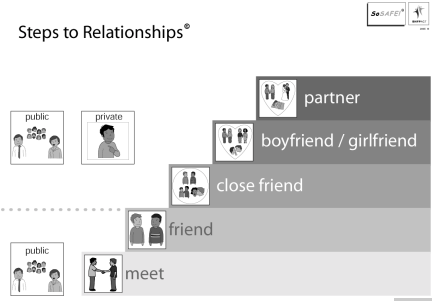
## Okay & Consent

- These terms are not used interchangeably in **SoSAFE!**
- Consent = permitted
- OK = permissible




## Steps to Relationships

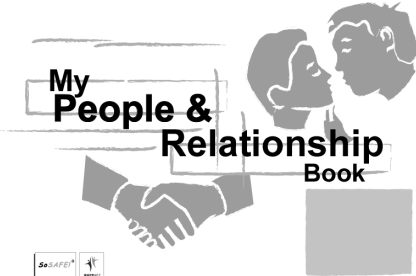
Steps to Relationships®





- To encourage and teach students to move into intimate relationships in a gradual and safe manner
- Seeks to capitalise on the kinesthetic and visual experience clients have of climbing steps
  - **We don't rush up the steps!**
  - **We can stop on any step we like. Stay there. Go up a step or go down steps.**




## People & Relationship Book



My People & Relationship Book



- STR summary chart
- OK helpers page
- Private helpers pages
- Help page
- Pictures of people in each person-type category
- Yes, yes, okay page



## How ...?

- Whole-organisation collaboration
  - Timelines, resource support
  - Consistency in terminology & implementation
  - Staff modelling of appropriate social behaviour
- Cumulative introduction of concepts
  - Gradual building of understanding
  - Mastery of each concept not essential for introduction of new concepts

SosAFE

## How ...?

- Sustained program implementation + short, frequent training sessions
  - Talk with pictures
  - Use activities (e.g. Lotto) available on CD
- Training in 'natural settings' as frequently as possible
  - Both structured and incidental teaching are important

SosAFE

## For more information ...

**03 9391 6122**  
**or**  
**[www.pecsaustralia.com](http://www.pecsaustralia.com)**

SosAFE